

# Assembly guide

by

Trent Henry (nothing),  
and Steve Bondy (sjsquirrel)

## Battlestar Galactica

adapted from

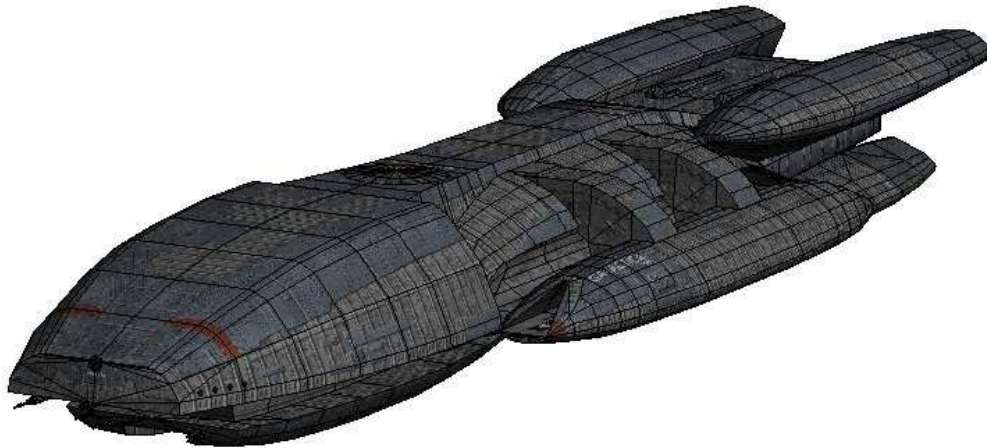
The Battlestar Galactica Ship Pack by Coxson, MadJohn, and Dave975

This model is available in a large and regular version, and features retractable landing bays. This guide covers assembly of both versions.

In the large version many of the hull sections had to be split across several pages. Each of these pieces is numbered individually. For the regular version these parts remain a single piece, and the numbers indicate which pieces of the large version are combined.

Please send any and all feedback, as well as pictures of your completed builds to [stevebondy@shaw.ca](mailto:stevebondy@shaw.ca), or start a build thread in the Cardmodels forum ( <http://forum.zealot.com/f7> ).

Enjoy!

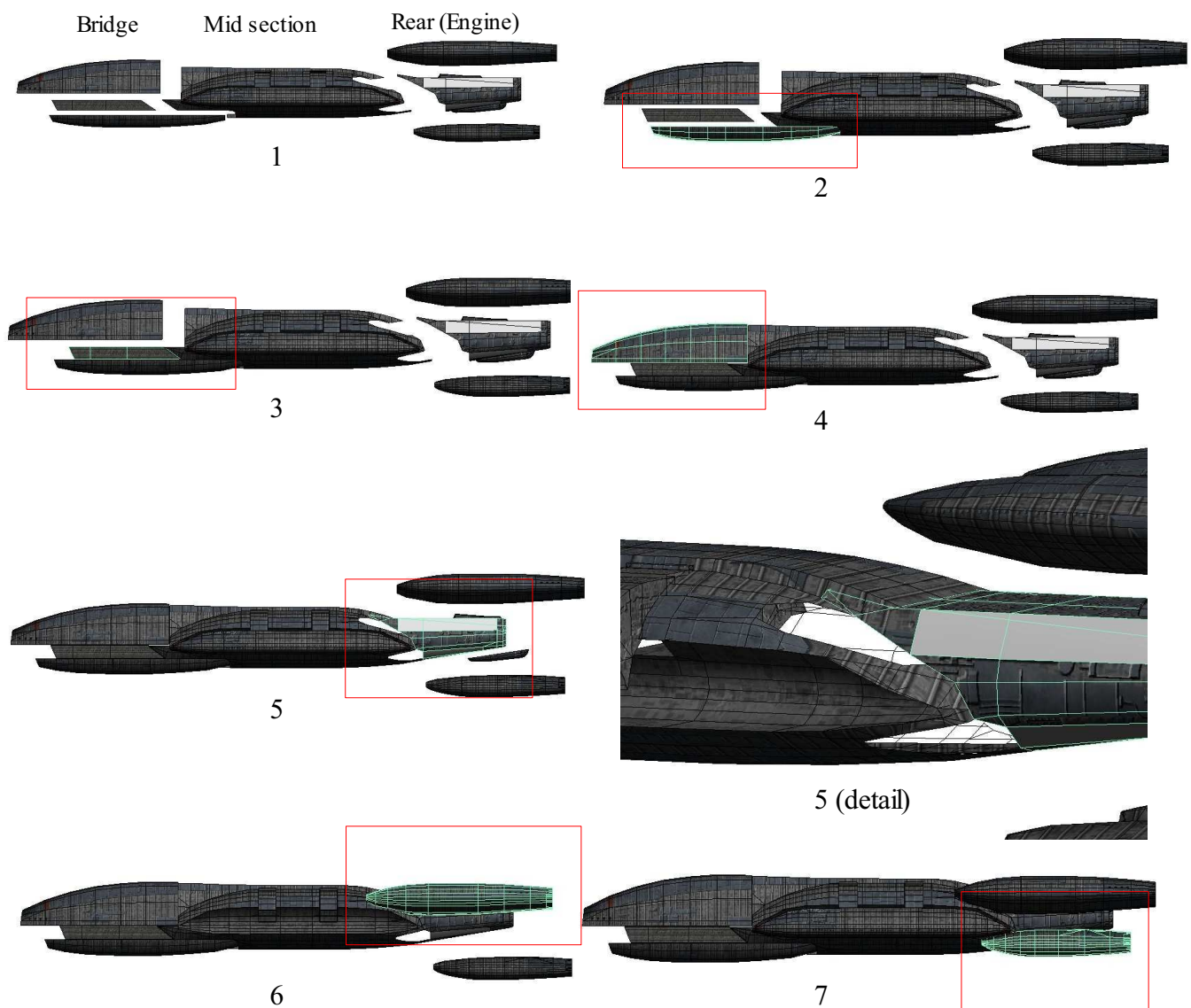


The Galactica is divided into three main sections. The Bridge (forward) section, the Mid section, and the Rear (Engine) section. Because of the way the sections connect together each of the three main sections must be built to a certain point, then the final assembly of the entire ship completed.

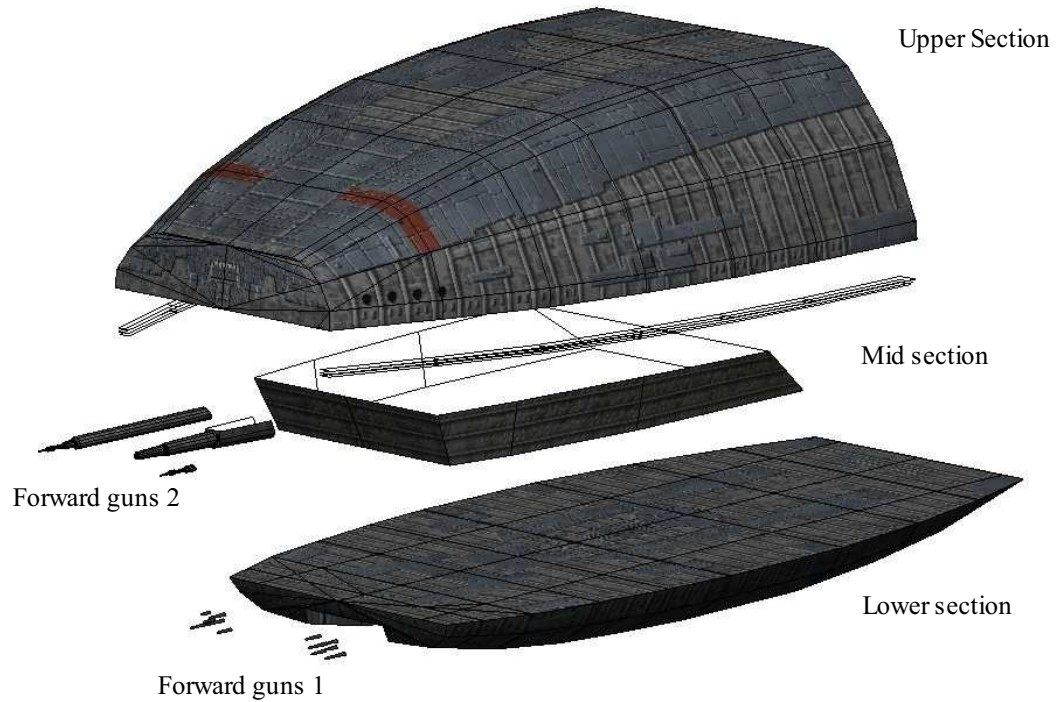
- The mid section can be built to completion.
- The bridge section consists of an upper, central, and lower component. These should be built, but not glued together until final assembly.
- The rear (engine) section consists of the main hull component, and the four engines. These five subcomponents can be assembled individually, and then attached to the mid section.

The following diagrams illustrates the suggested final assembly sequence.

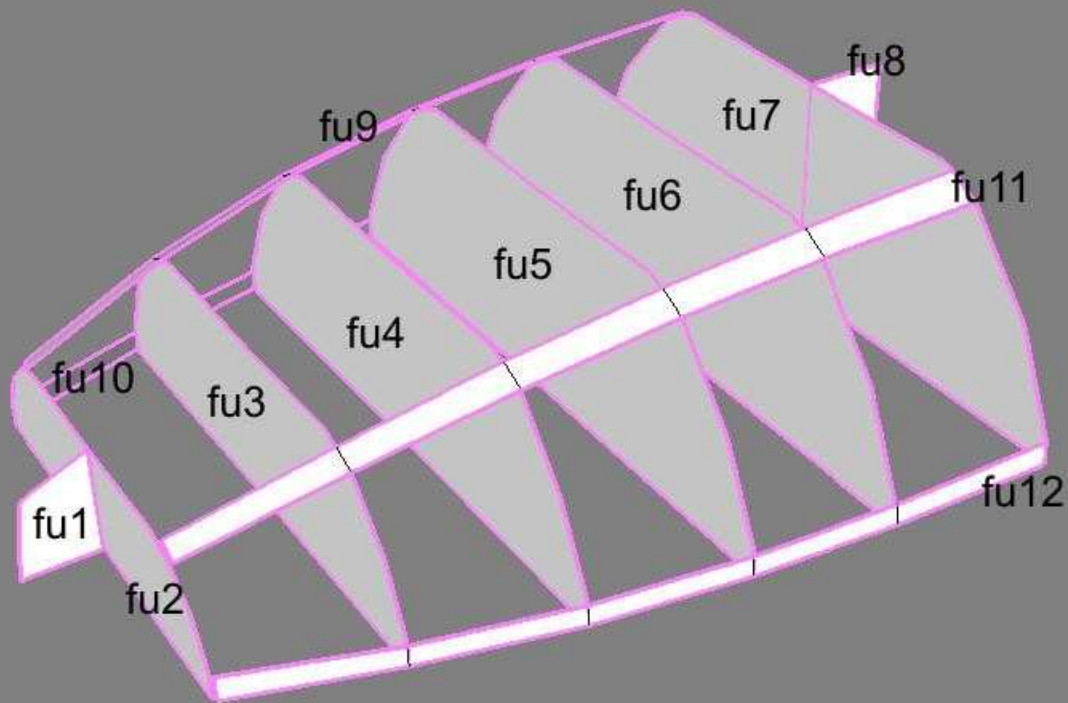
## Final Assembly

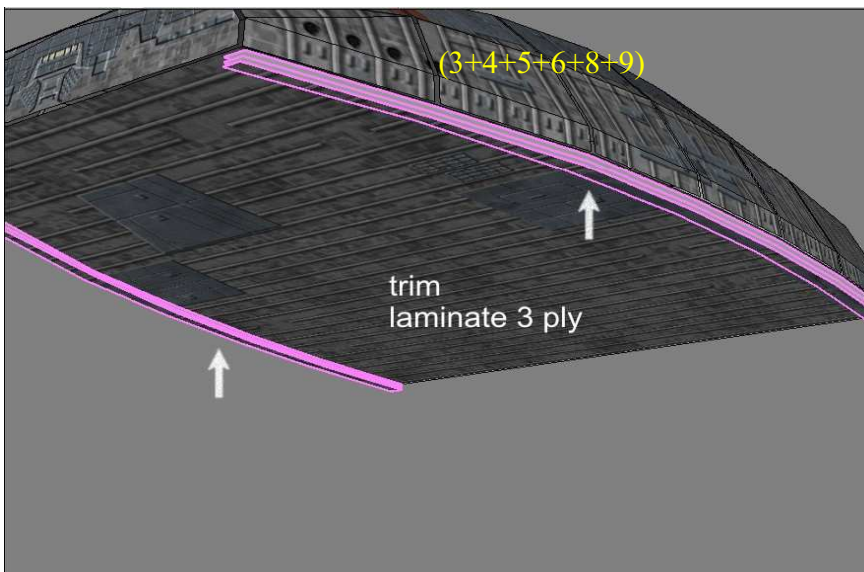
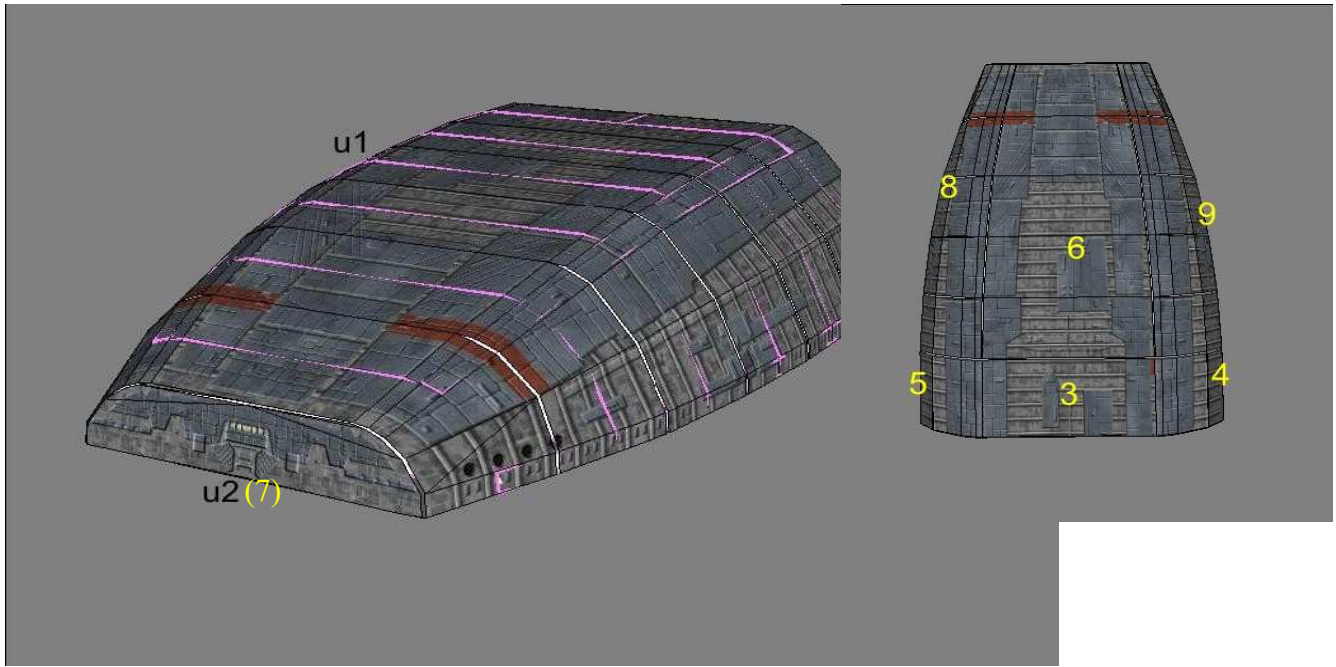


# Bridge Section

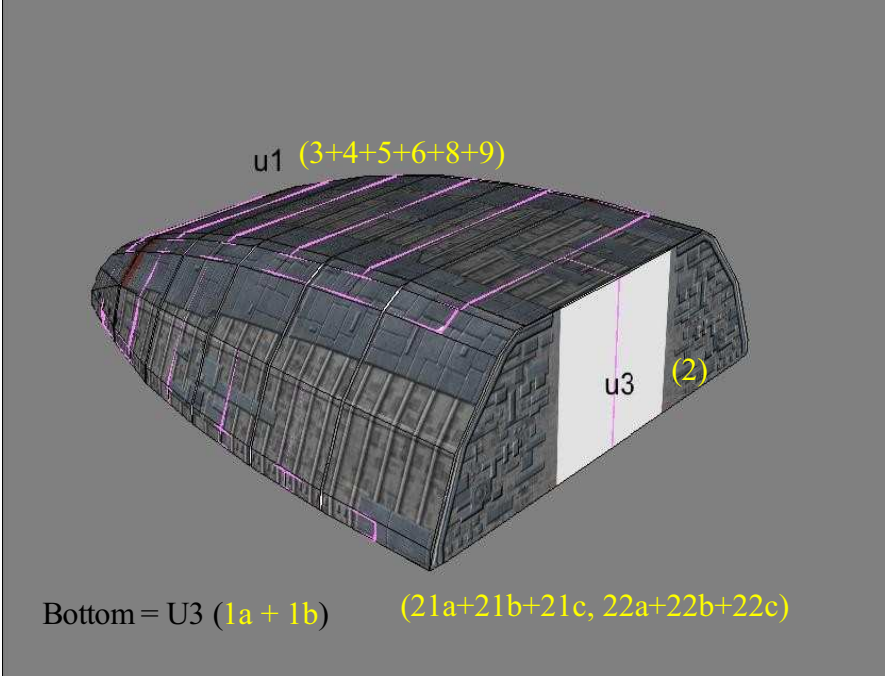


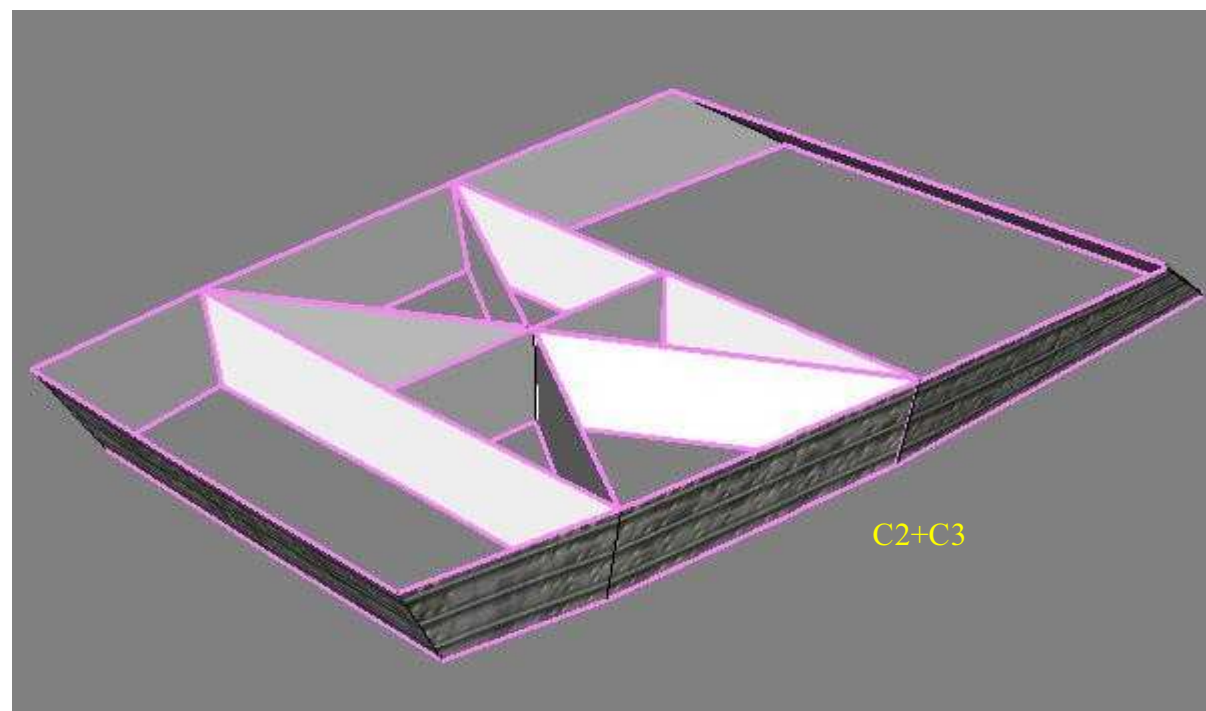
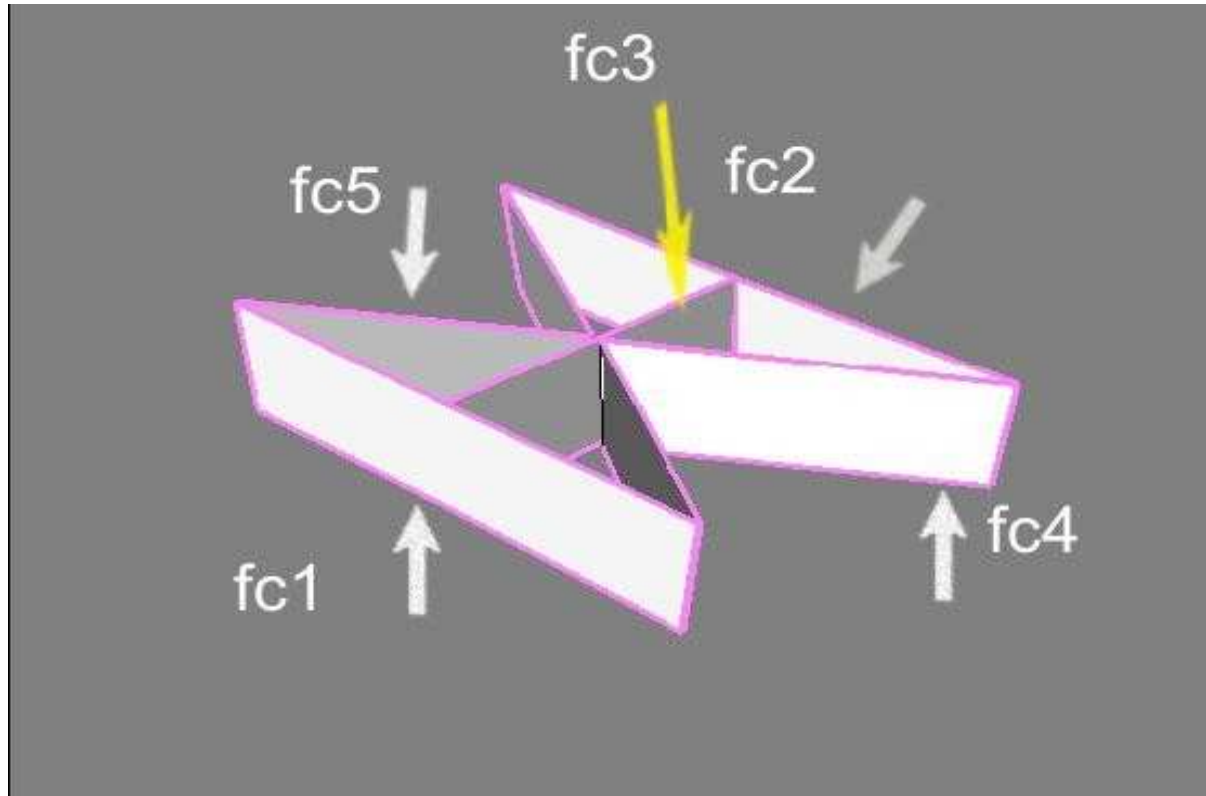
In the images that follow, part numbers in black refer to the small model version, while part numbers in **Yellow** (if present) refer to the Large version.

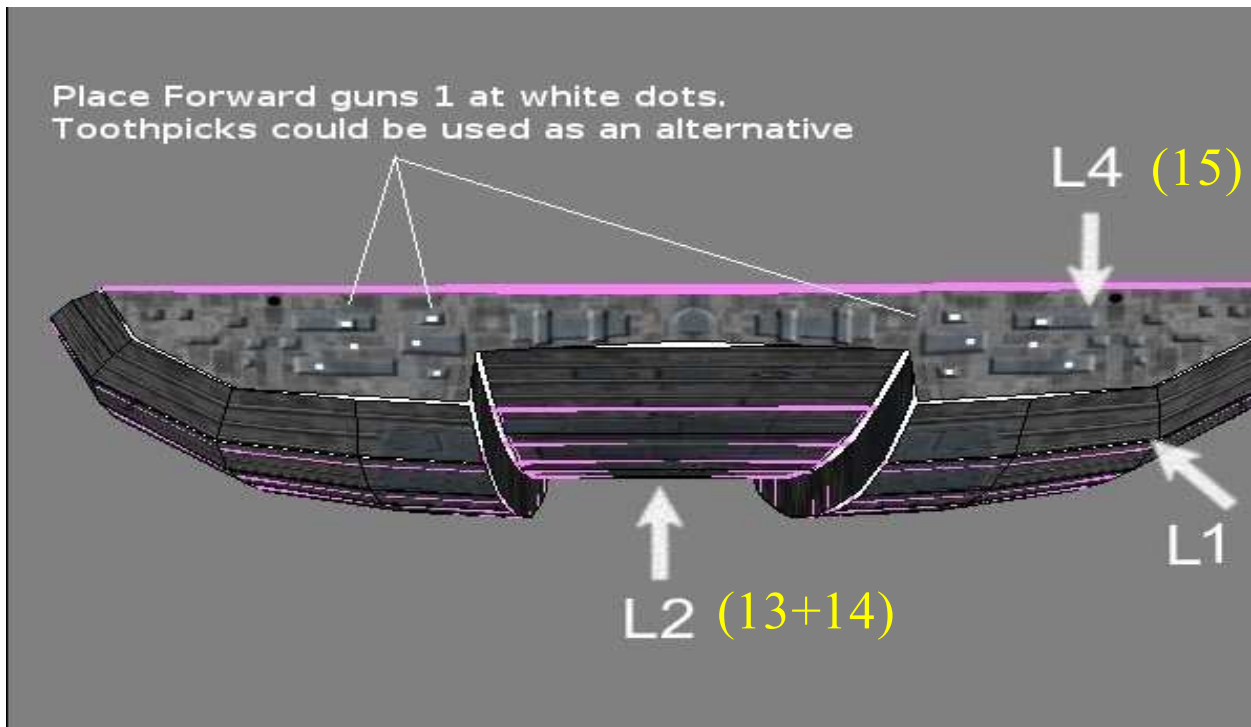
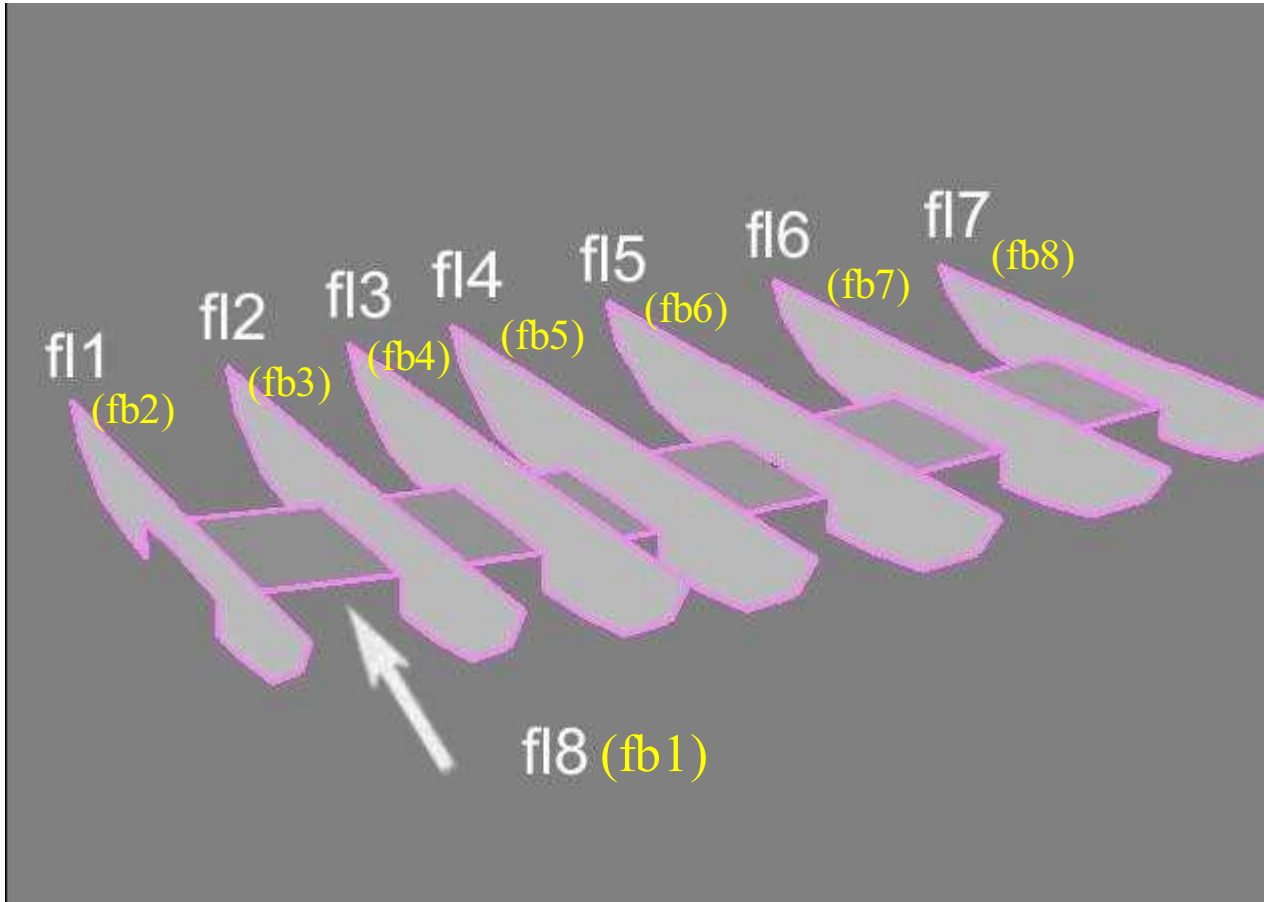






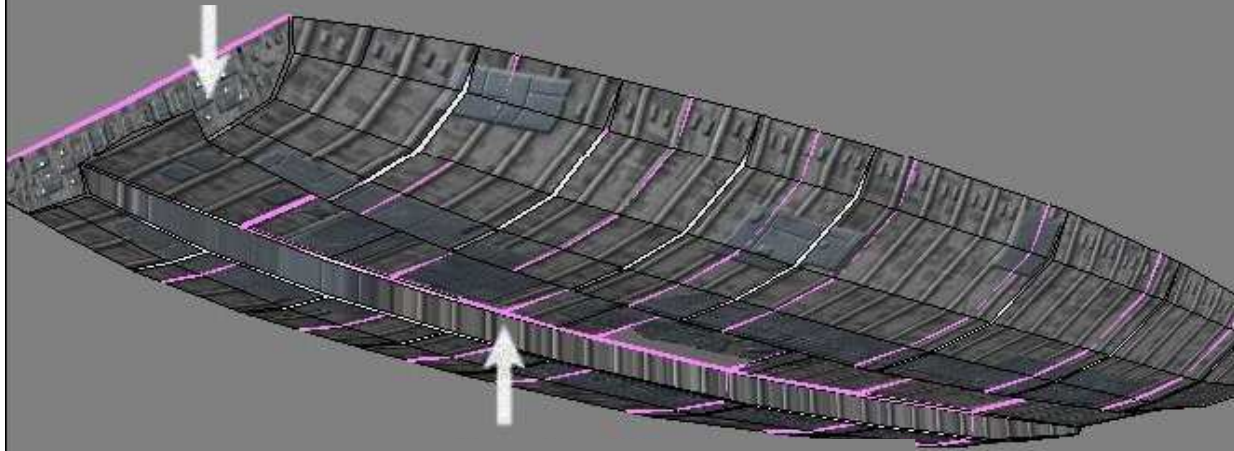






Small model version

L4 (front) L3 (Rear)

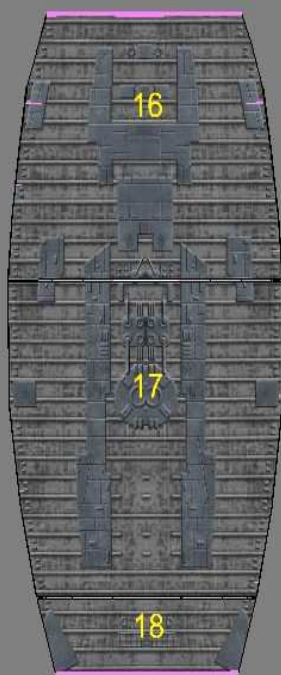


L5 (right) L6 (left)

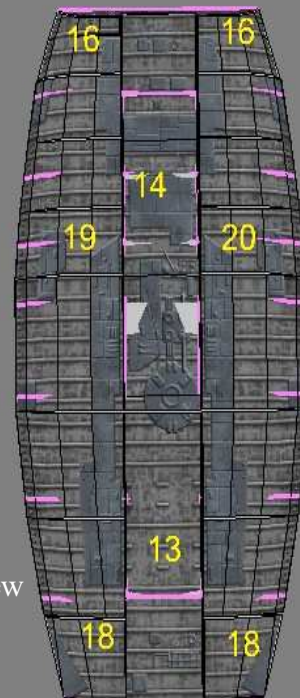
Large model version

pink lines are internal formers

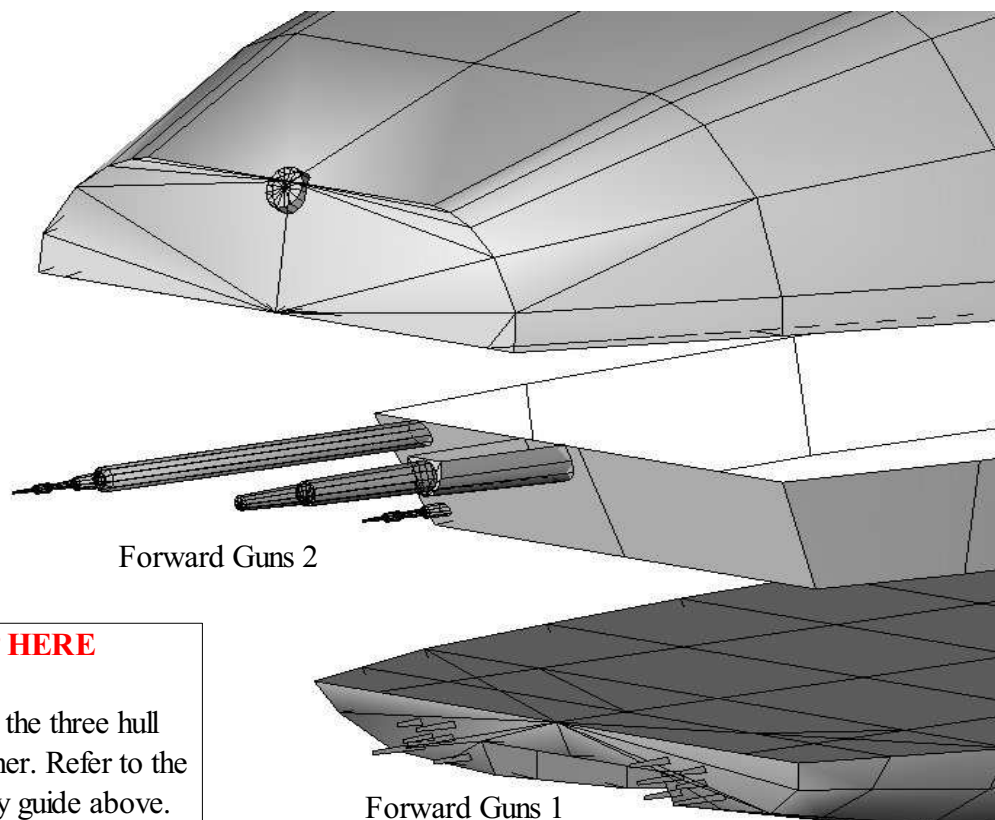
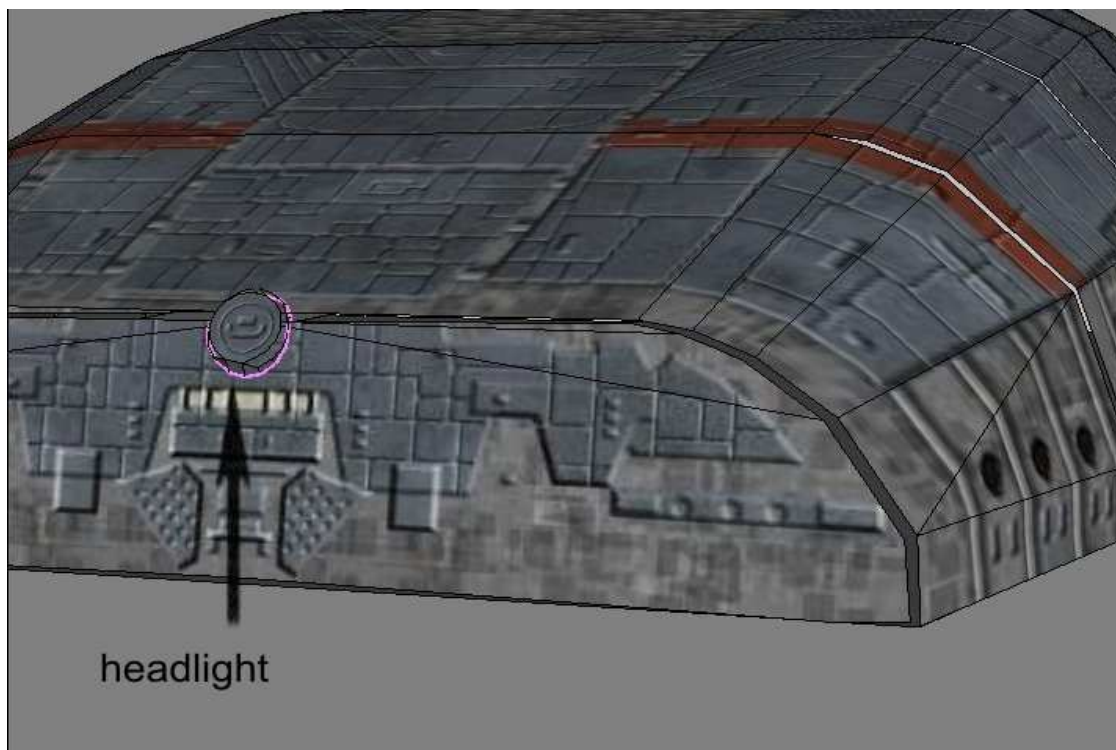
Top View



Bottom View







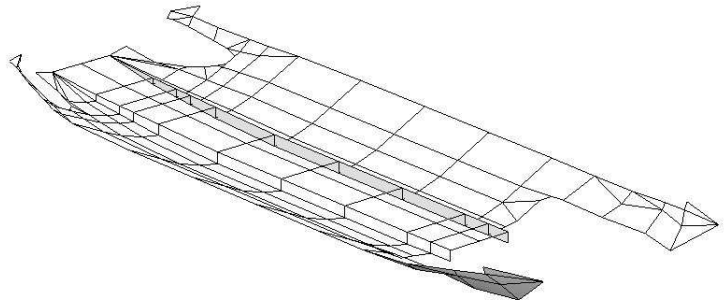
**STOP HERE**

Do not glue the three hull sections together. Refer to the final assembly guide above.

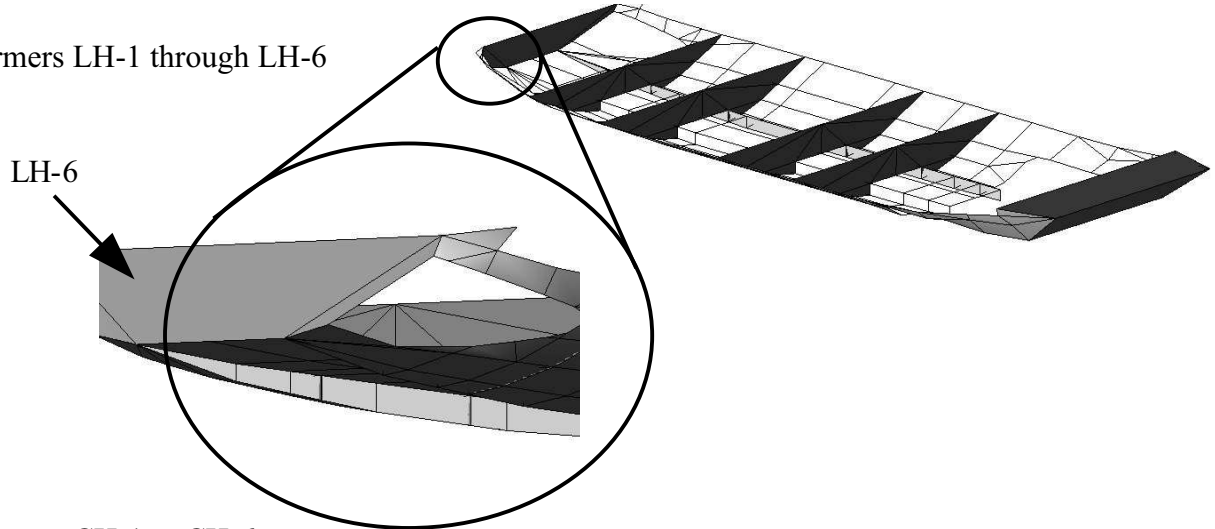
# Mid section Assembly

Study the diagrams carefully.

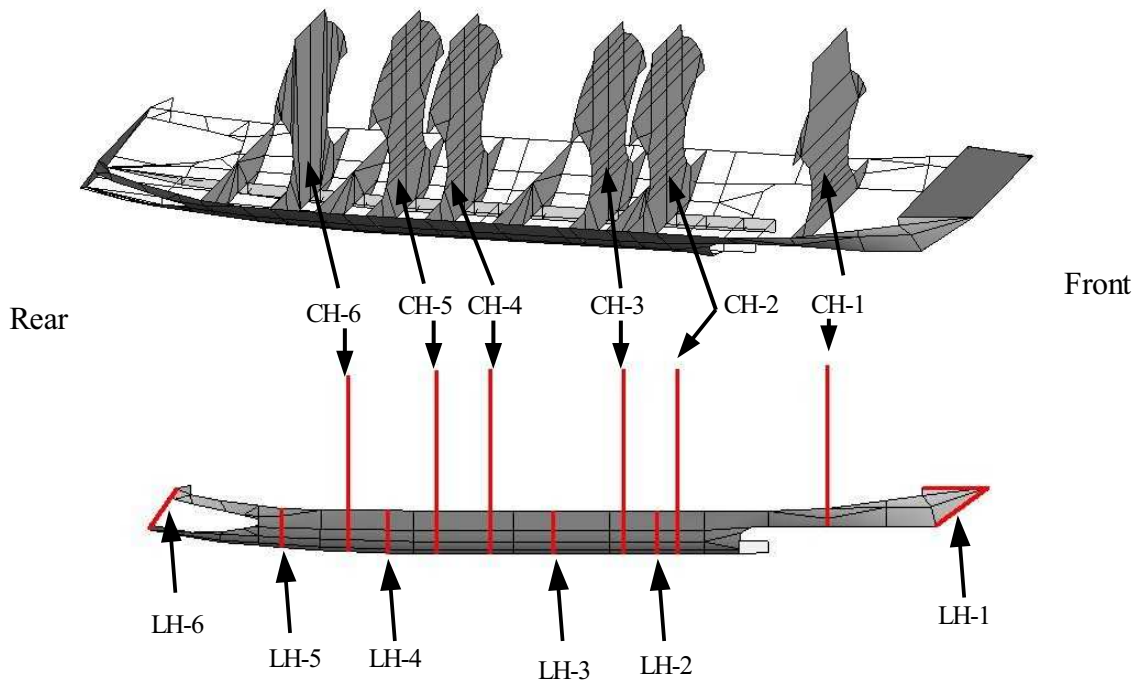
Cut out and shape part 1

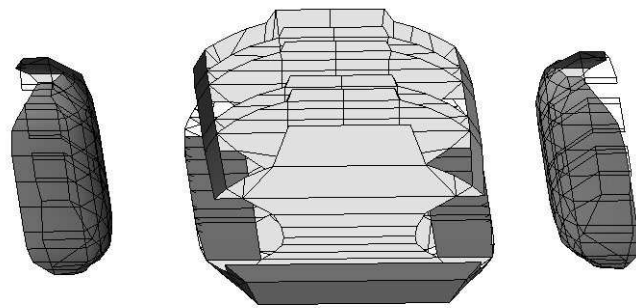
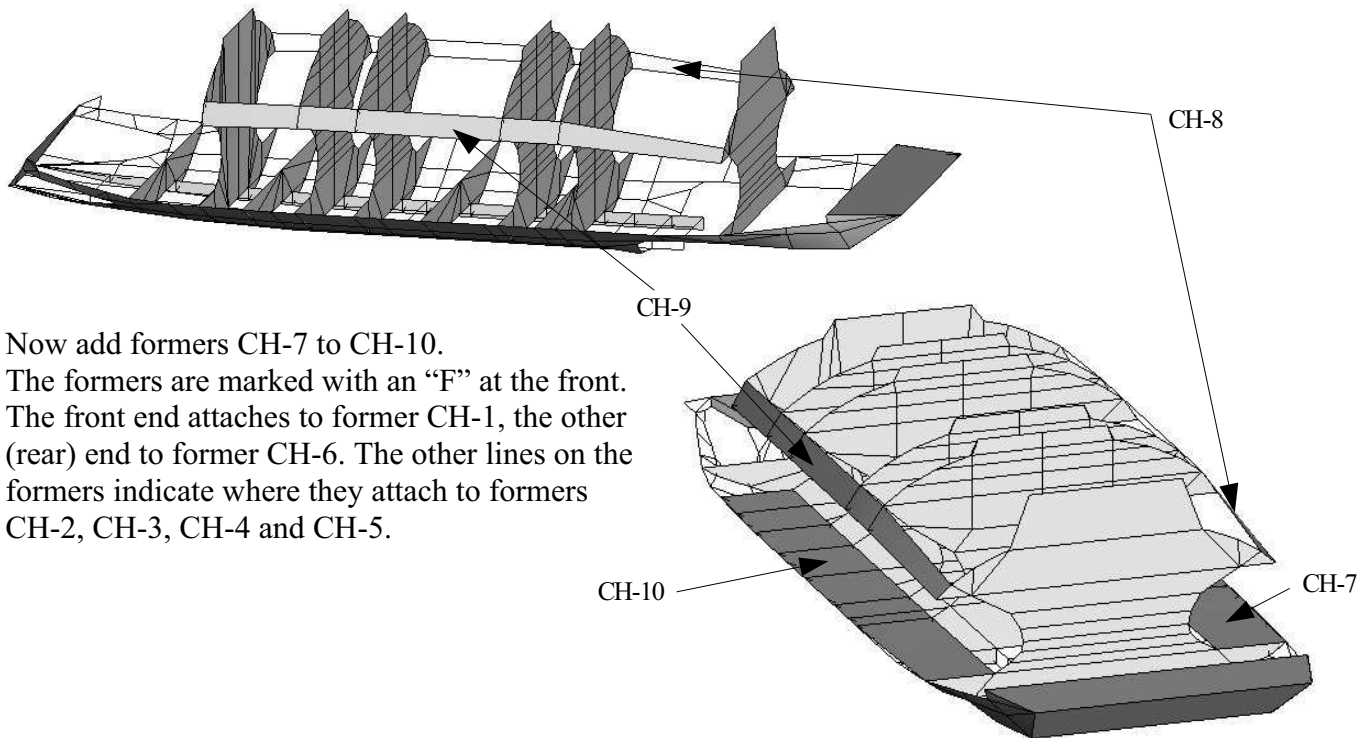


Add formers LH-1 through LH-6



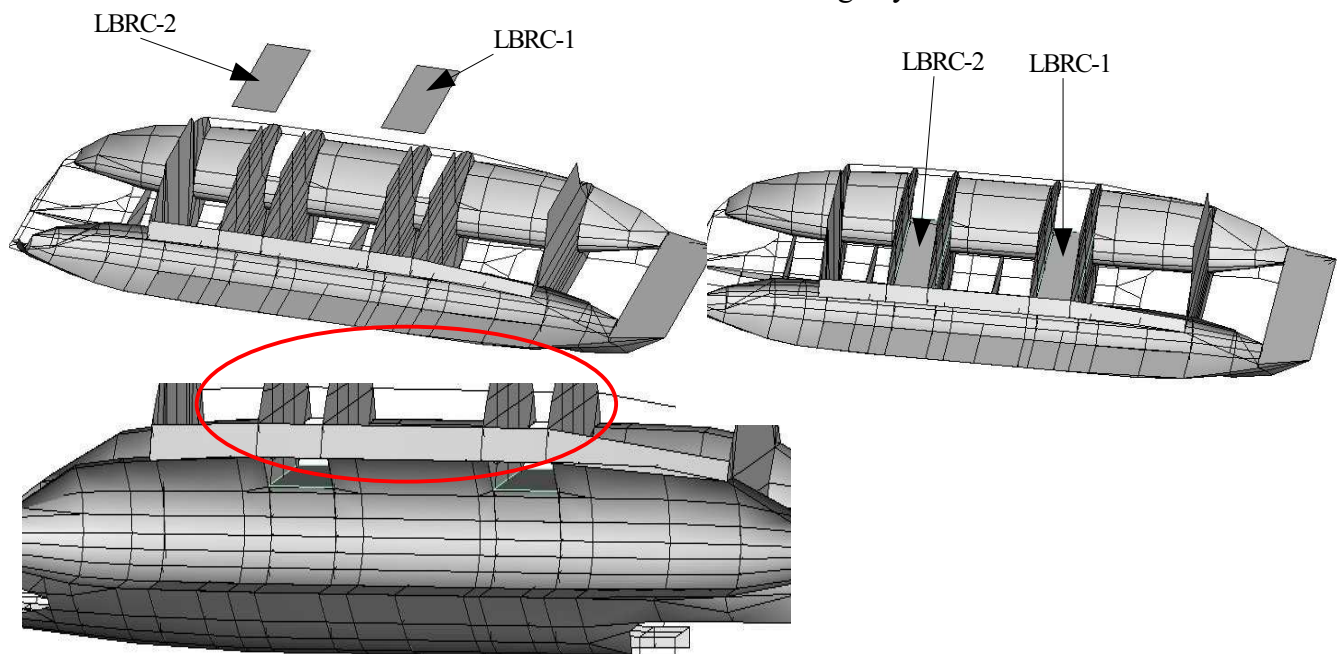
Add formers CH-1 to CH-6.

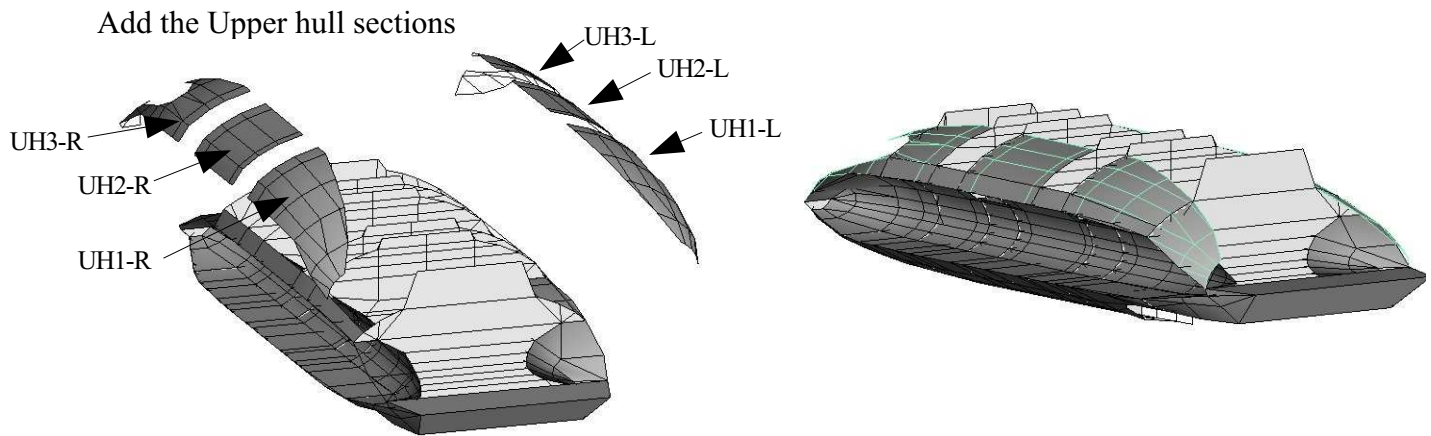




Now assemble the landing bay recesses, LBR-L and LBR-R.

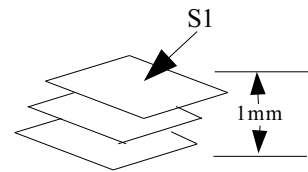
As shown below, part LBRC-1 drops down in between formers CH-2 and CH3. Part LBRC-2 drops down between formers CH-4 and CH-5. These connect the landing bay recesses for strength, and form the "floor" of the area where the landing bay arms will rest.



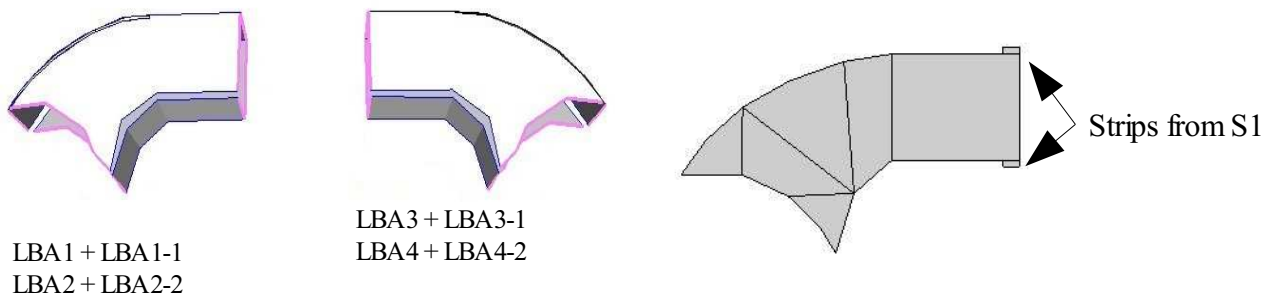


And now comes the really exciting part. The retractable landing bay arms!

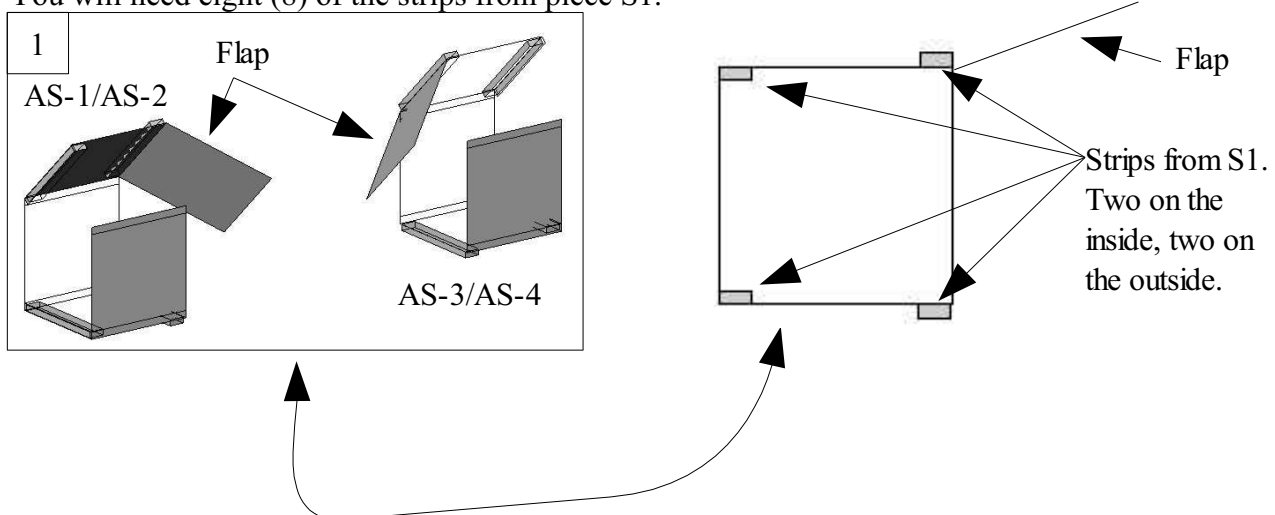
Start by laminating S1 to heavy card. You need a thickness of about 1mm. Stack a heavy book or two on it to keep it flat while it dries.



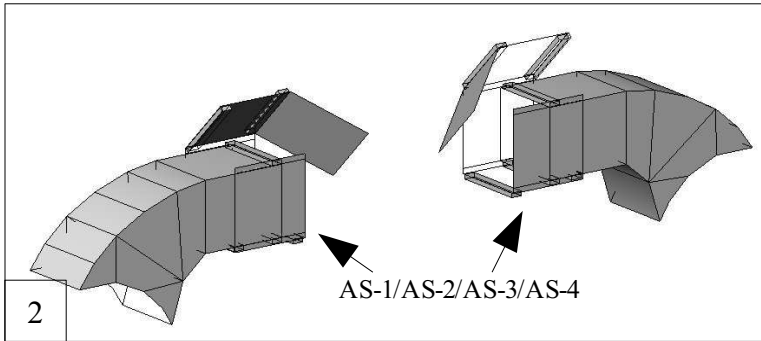
While the glue dries, assemble the four landing bay arms. All four are identical. Glue strips from S1 on the outer surface of each landing bay arm as shown (below right).



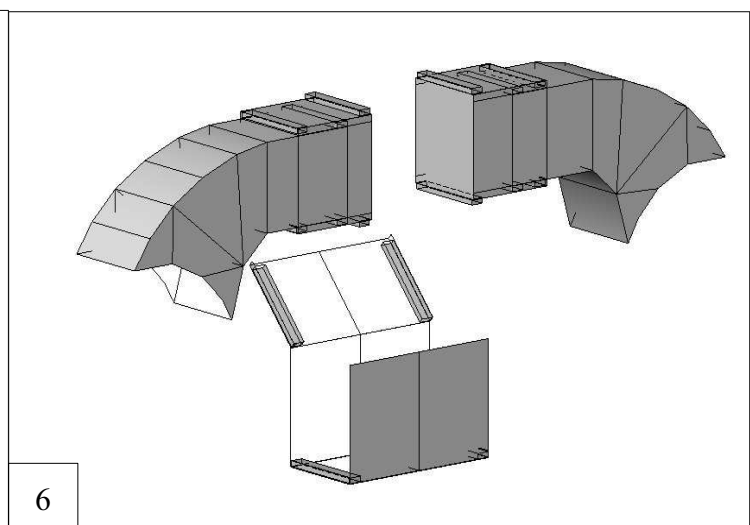
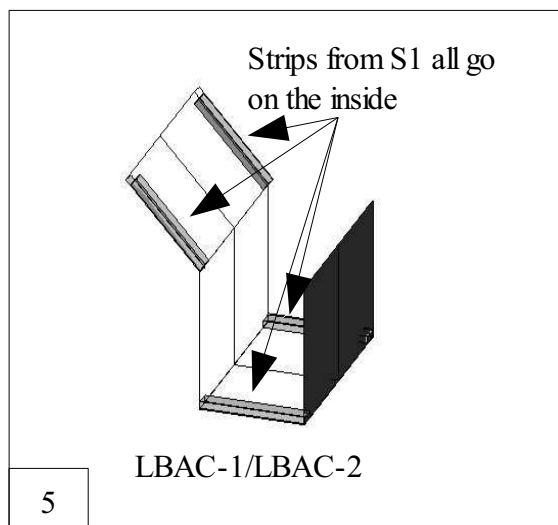
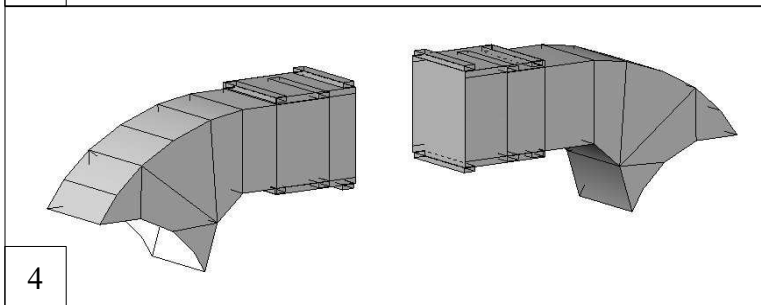
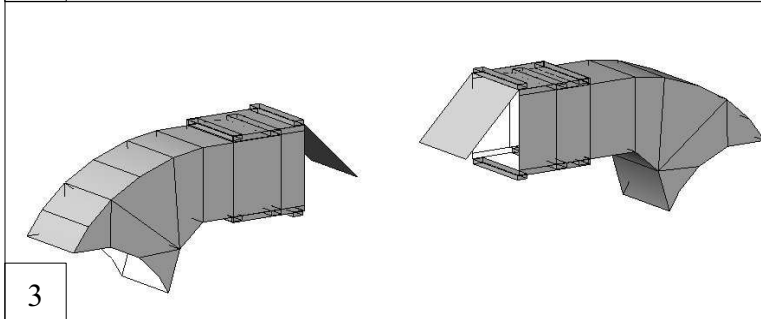
Now assemble the four “arm sockets”, AS-1, AS-2, AS-3 and AS-4 to the point shown – don't glue them closed yet. Each will be wrapped around one of the arms as shown on the following page. You will need eight (8) of the strips from piece S1.

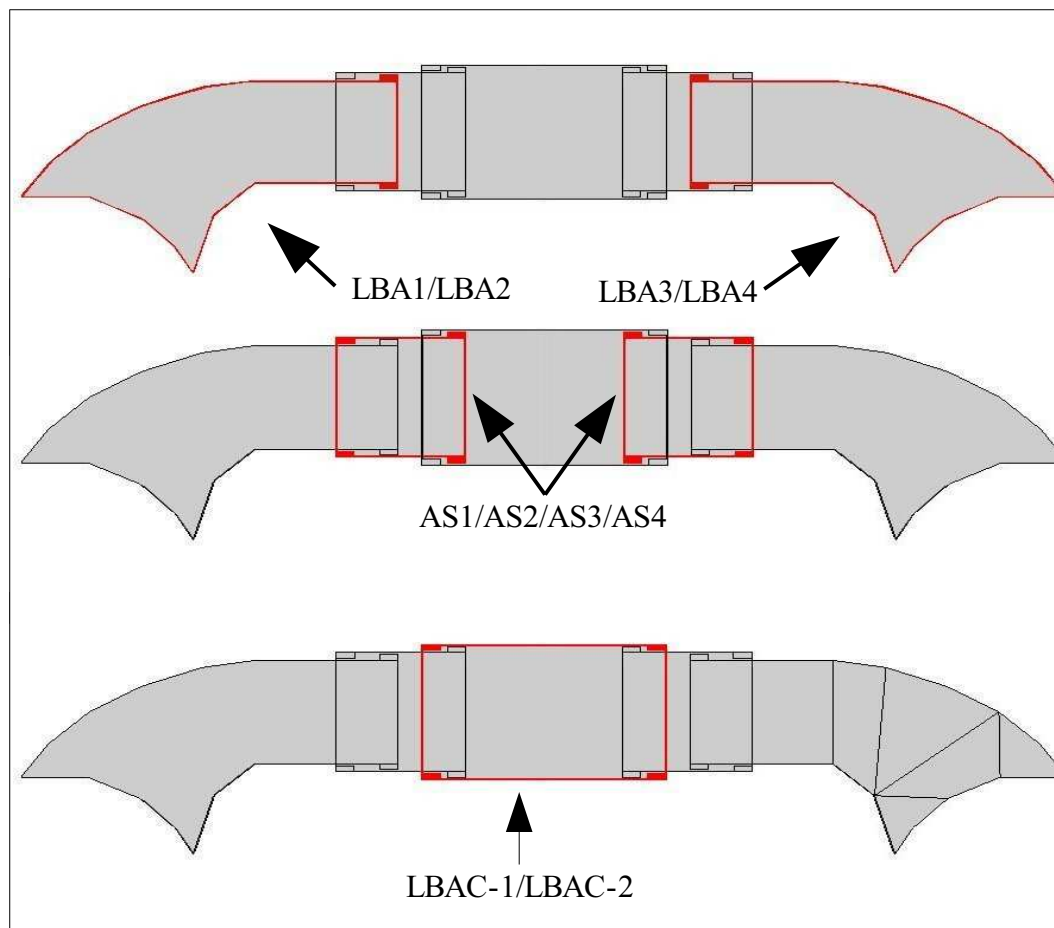
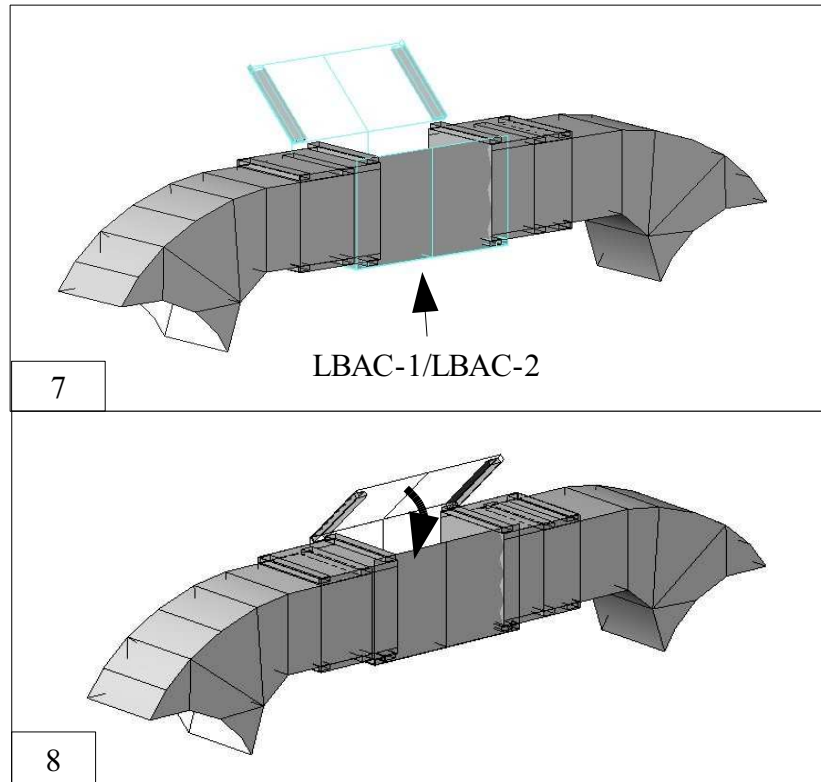


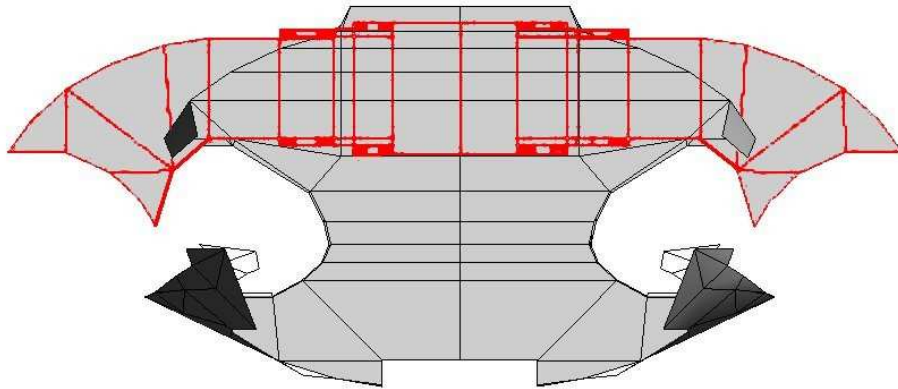
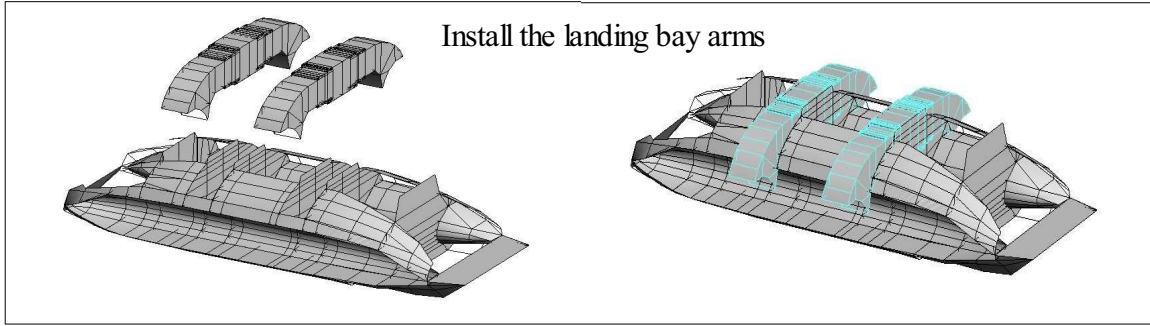




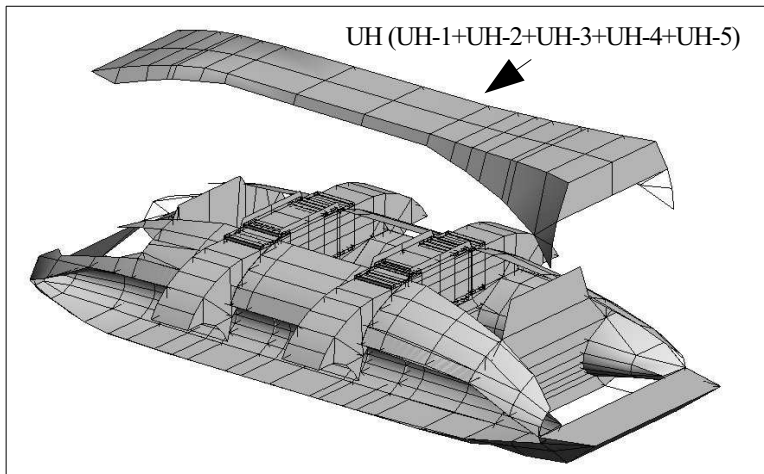
Study the diagrams carefully so you understand how everything fits together, and how it's supposed to work.



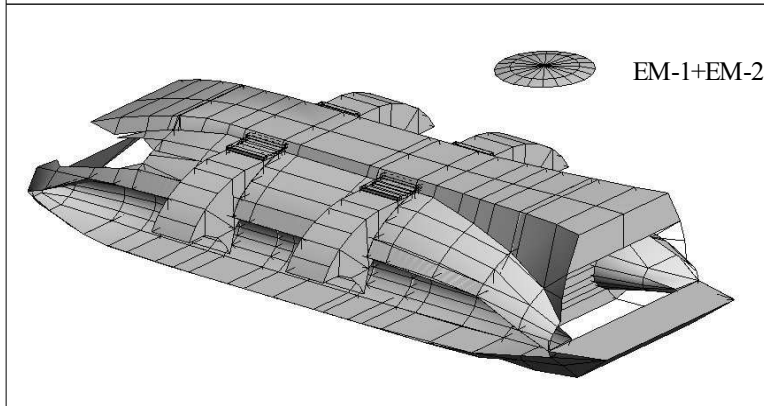




Add the upper hull

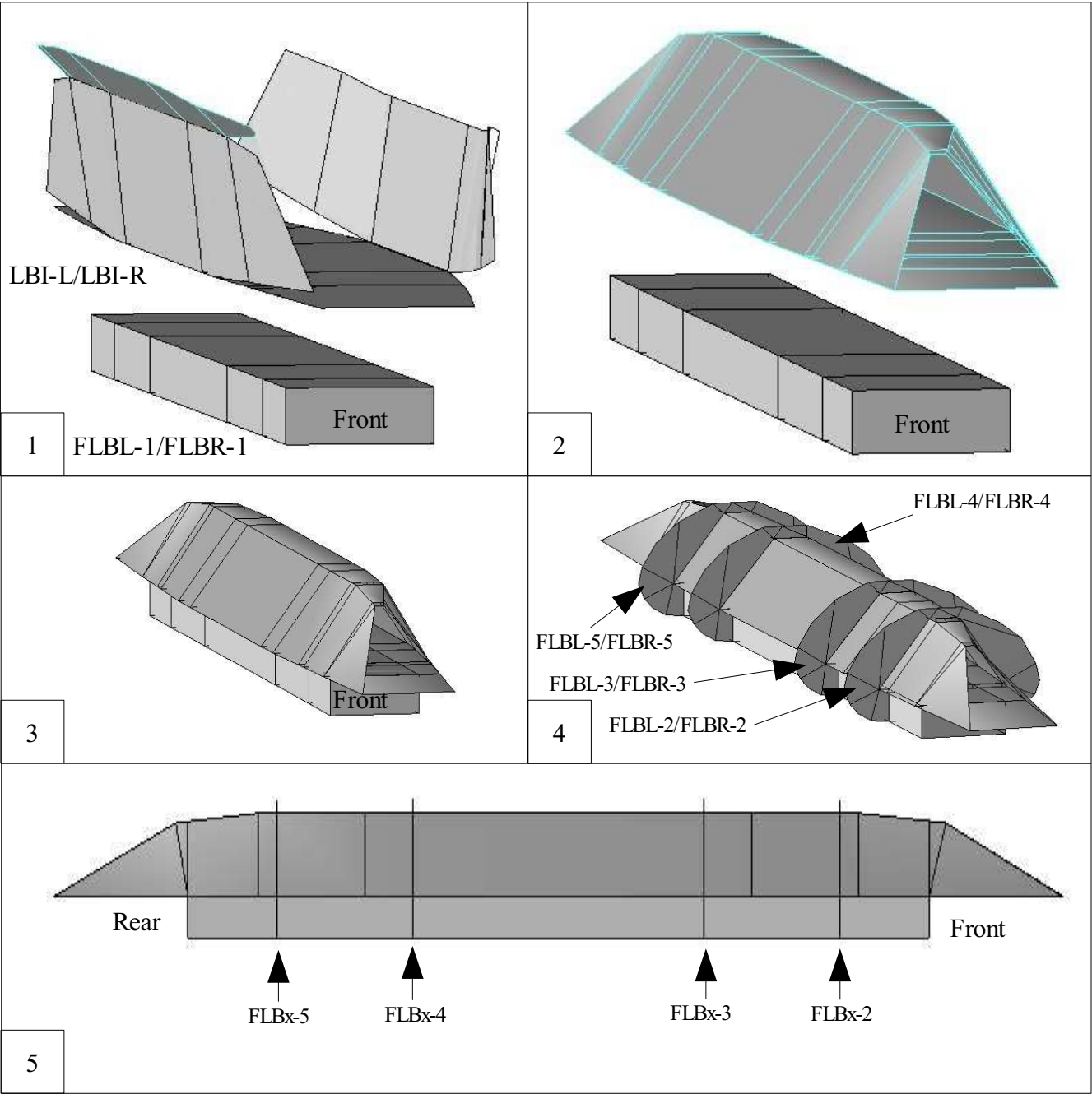


And the emblem of  
the twelve colonies



# Landing Bays

Work slowly and take care to position the parts carefully.  
The lines on pieces FLBx-1 and LBI-x will help you line them up properly. The lines on LBI-R and LBI-L are a faint grey, and are on the interior, so take care when positioning them.  
Refer to picture 5 for the positioning of the outer formers (FLBx-2/FLBx-3/FLBx-4/FLBx-5). They line up exactly with the lines on FLBL-1 and FLBR-1.



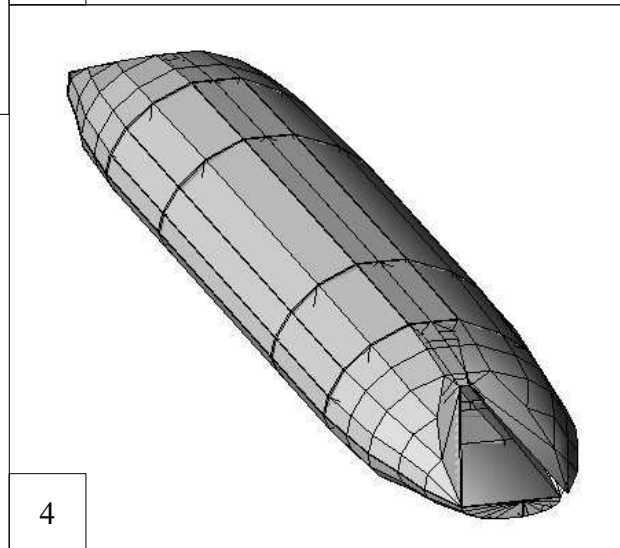
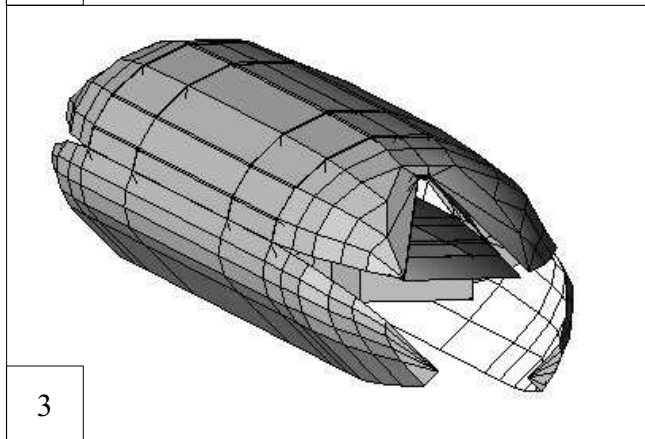
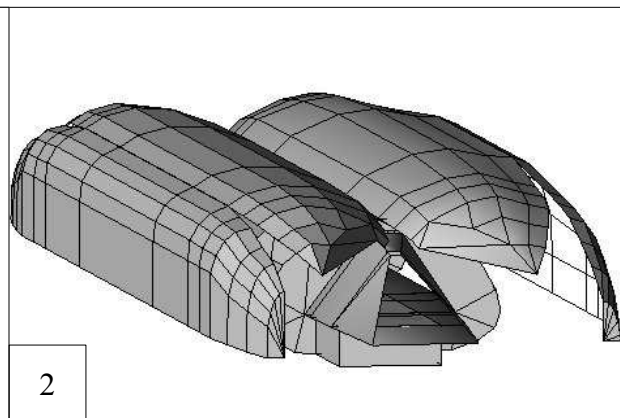
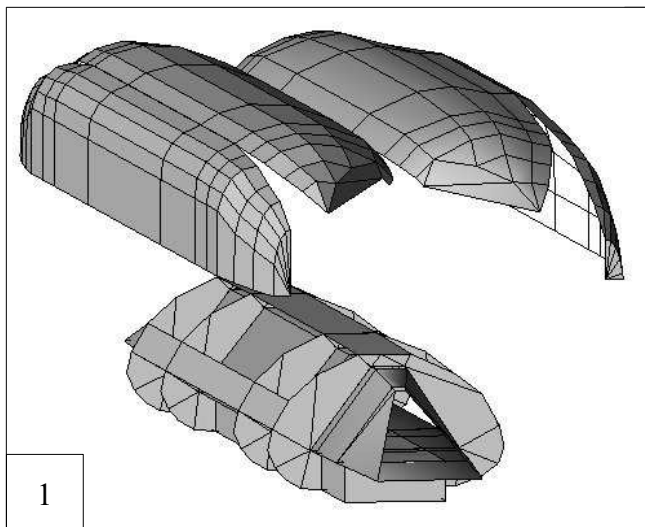
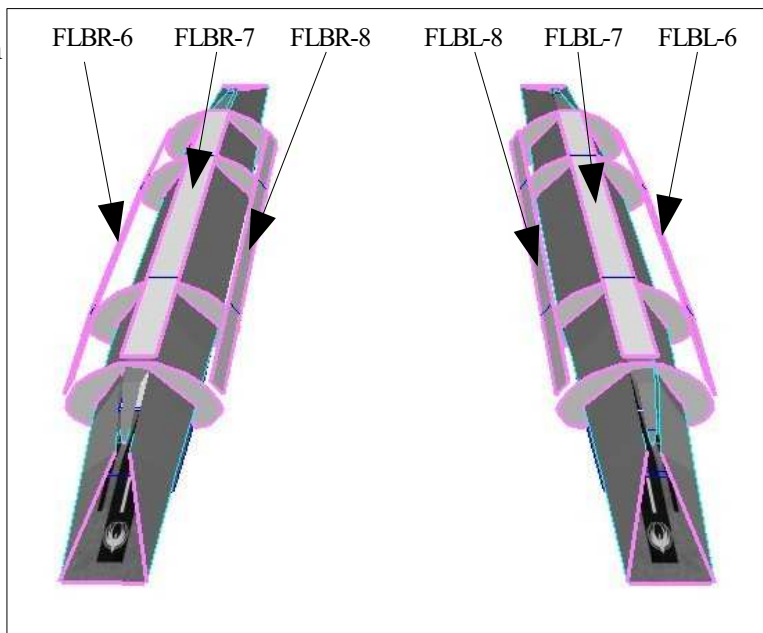


Add additional formers FLBx-6, FLBx-7, FLBx-8. These formers lock in the position of formers FLBx-2/3/4/5, and serve as glue surfaces when attaching the outer skins.

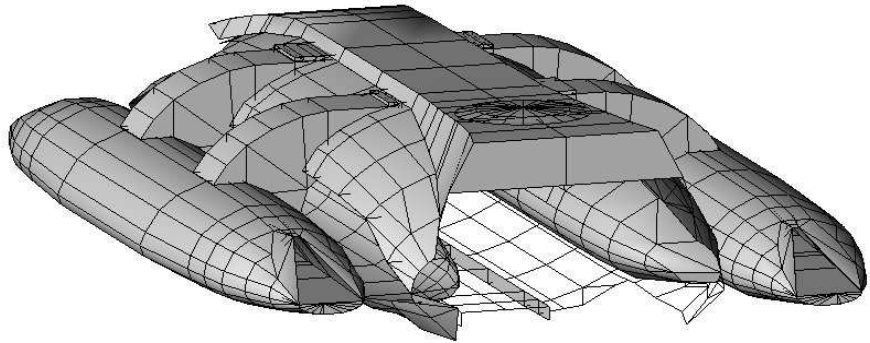
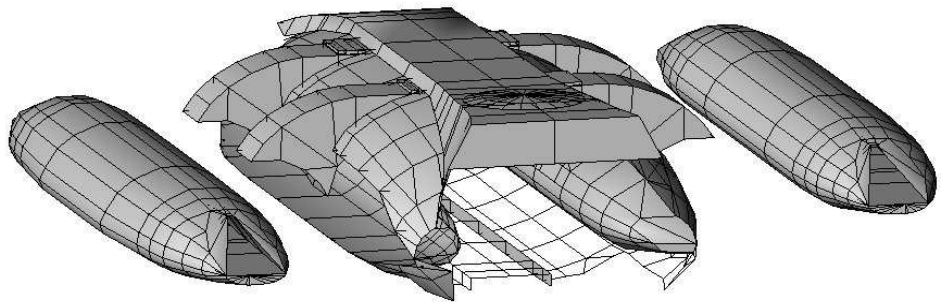
Next, wrap the outer skin (of the landing bays) around the interior, starting at the top and working around to the bottom.

On the small version these are a single piece – *Left Landing Bay Exterior* (page 9) and *Right Landing Bay Exterior* (page 10).

On the large version the landing bay interior and exterior are split over several pages. Parts LBL-1, LBL-2 and LBL-3 (Left) and LBR-1, LBR-2 and LBR-3 (Right)

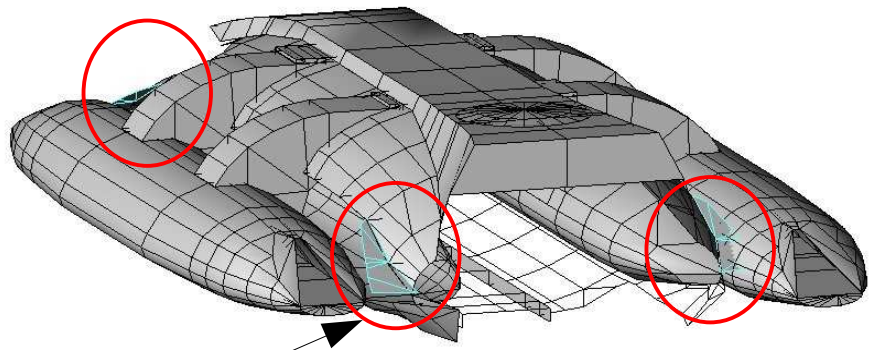
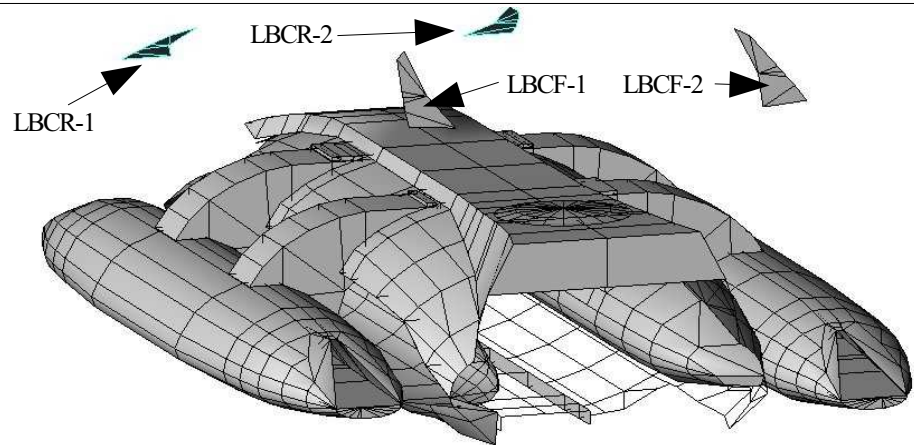


Attach the landing bay arms



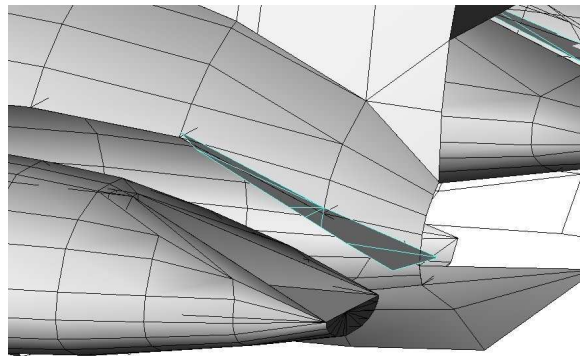
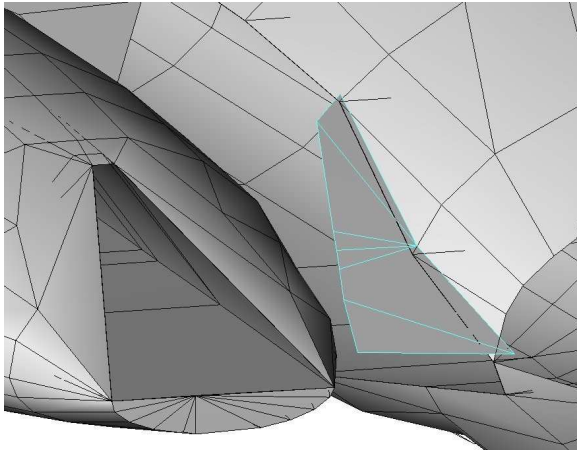
Attach the landing bay covers. These attach to the upper hull, just above the landing bay openings, when the landing bay is fully retracted.

There are two for the front (LBCF-1 and LBCF-2) and two for the rear (LBCR-1 and LBCR-2)



See detail next page

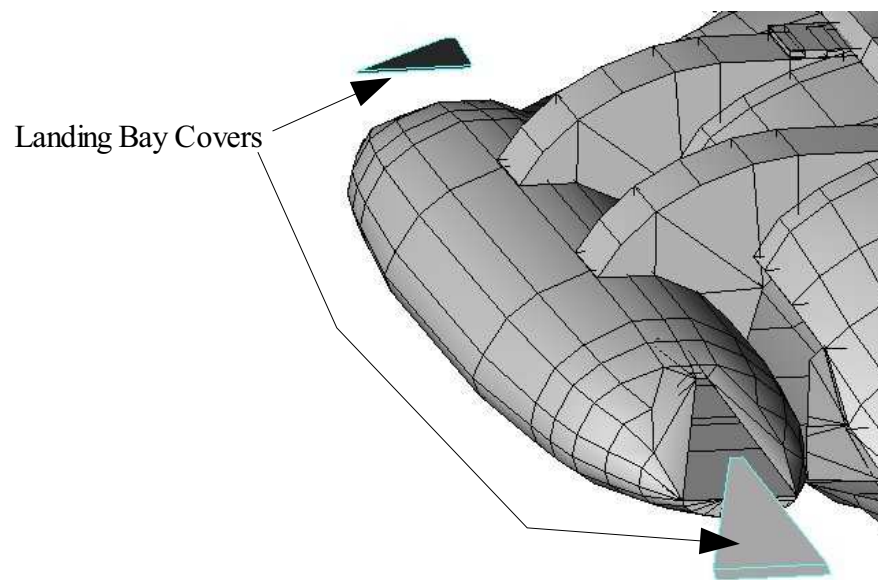
Standard landing bay cover detail:



## OPTIONAL

There are optional covers provided for both landing bays. These allow you to build the ship as it appears in the series premier, with the starboard (right) landing bay closed off.

Additional covers are supplied so you can both landing bays this way so you don't have to mess with the tricky internal bits.

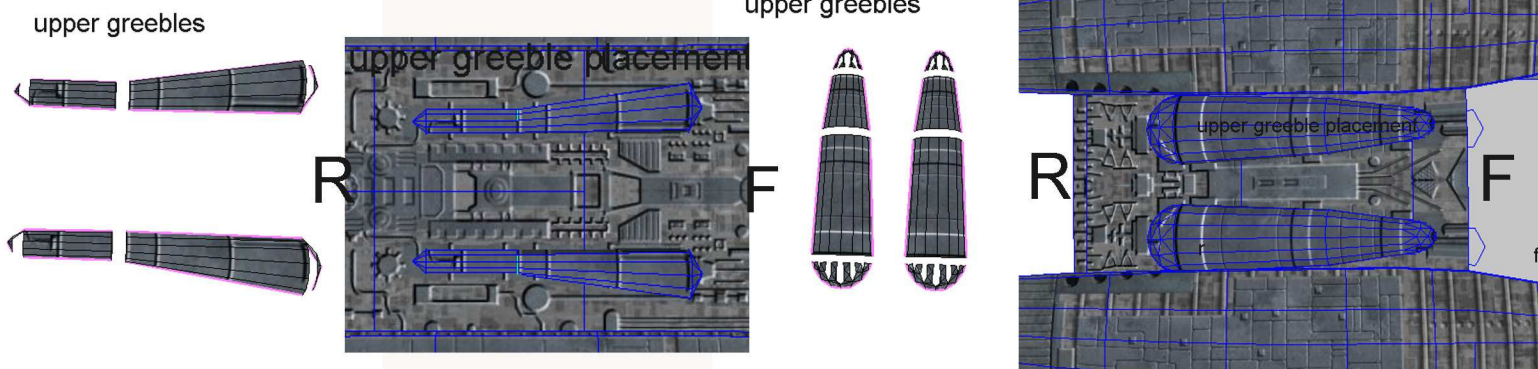
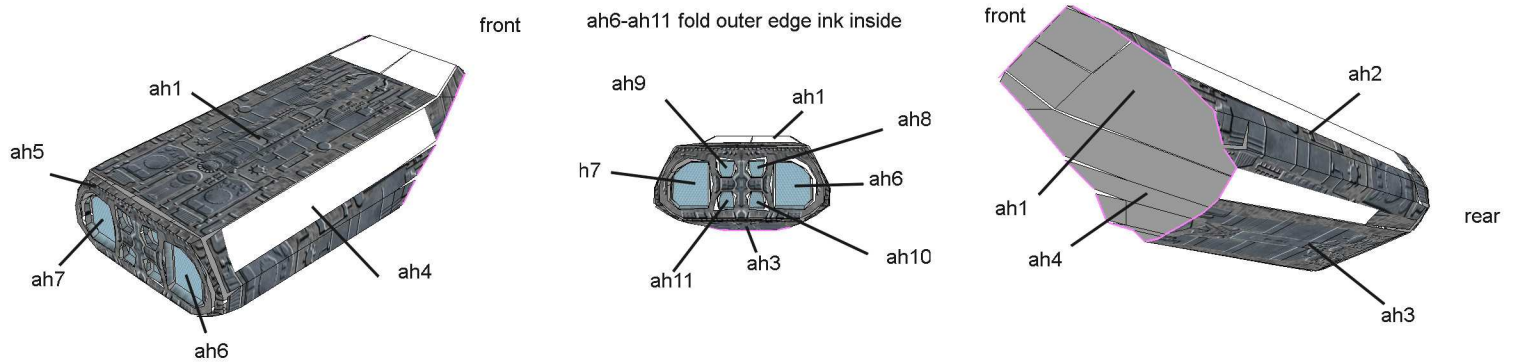
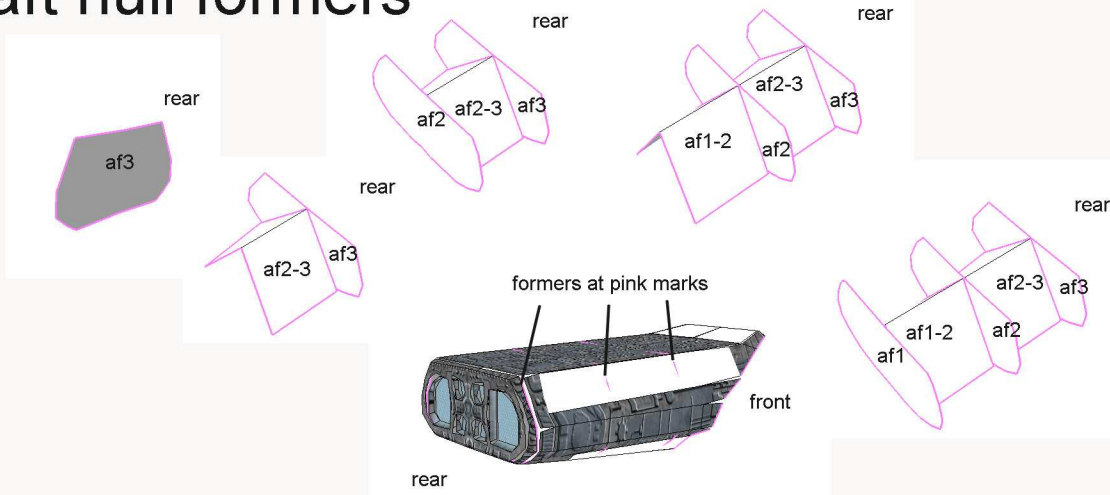


**This completes the mid section.**



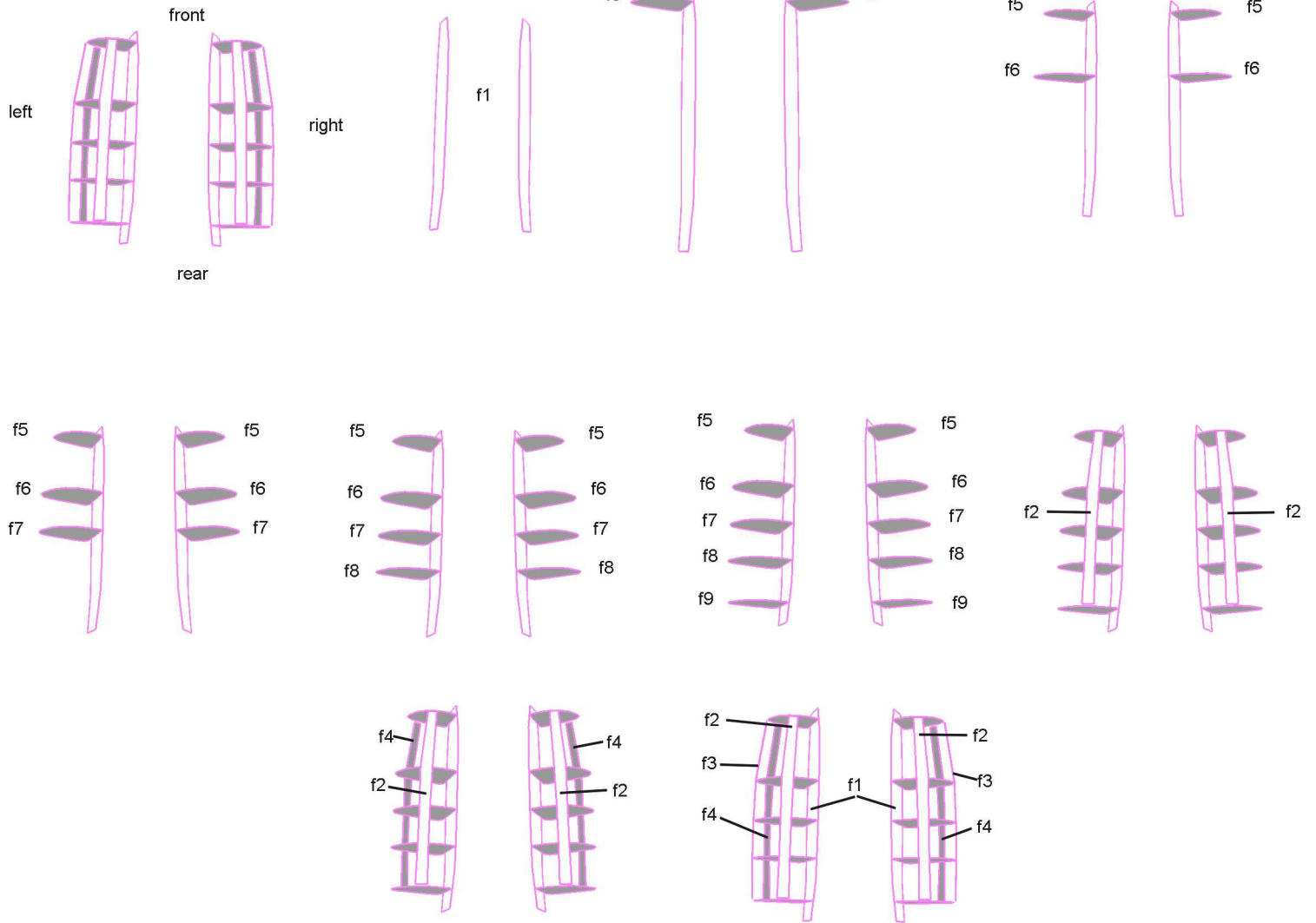
# aft hull formers

p1

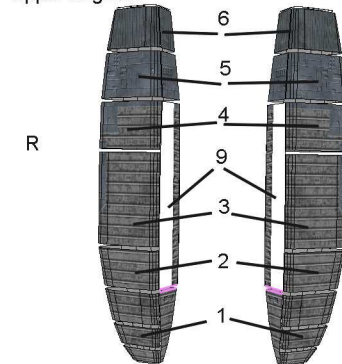




upper engine formers

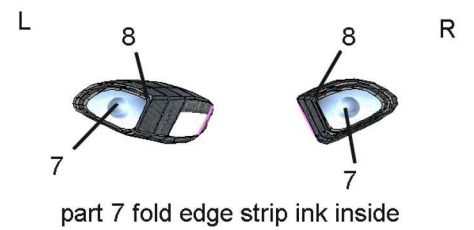


upper engines

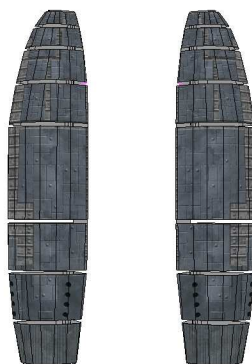
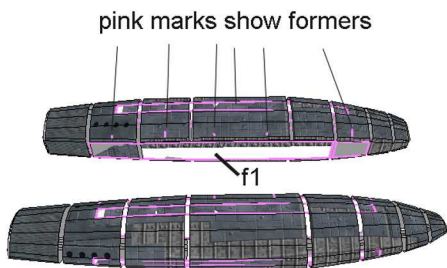


parts sheets are labeled upper left and right!!!!

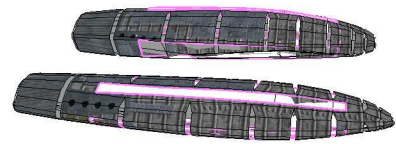
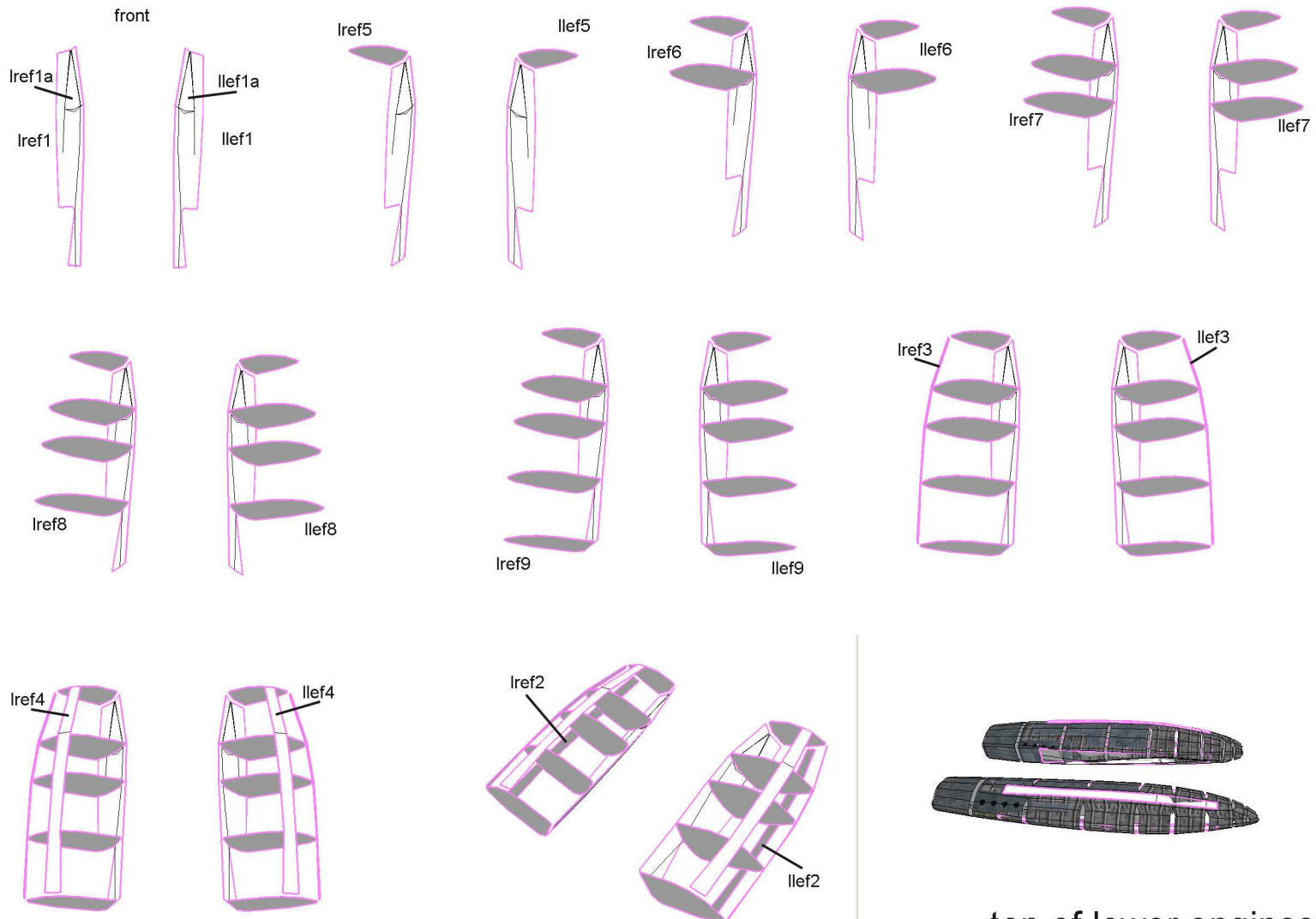
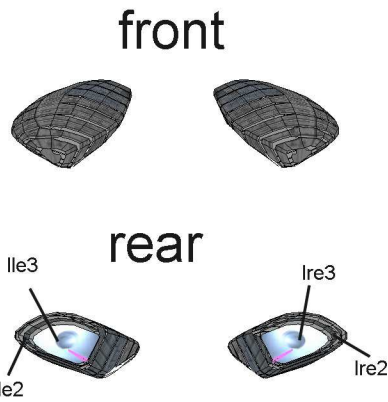
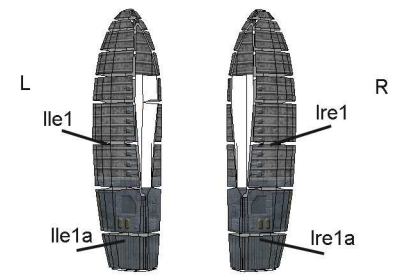
upper engines



part 7 fold edge strip ink inside



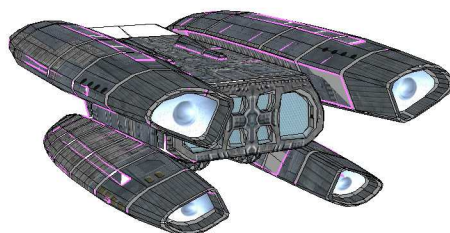
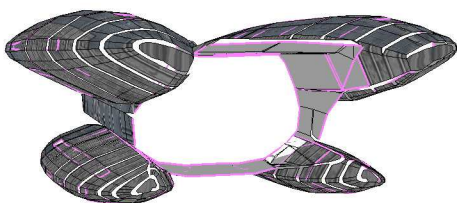
lower engines  
parts sheets are labeled lower left and right!!!



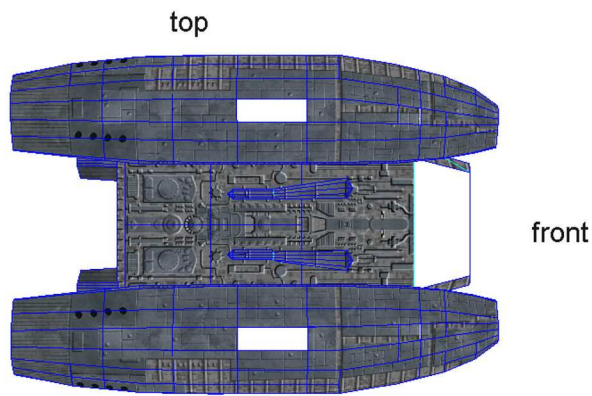
front perspective

rear perspective

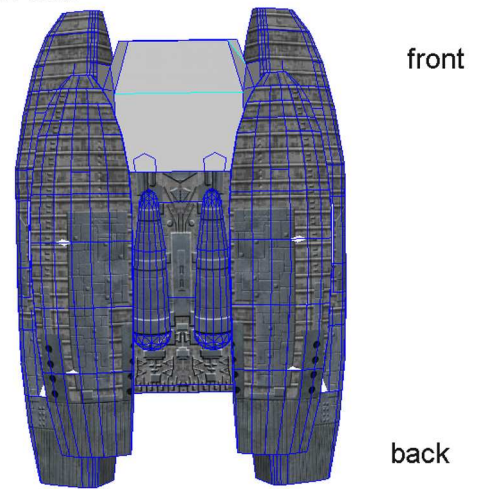
top of lower engines



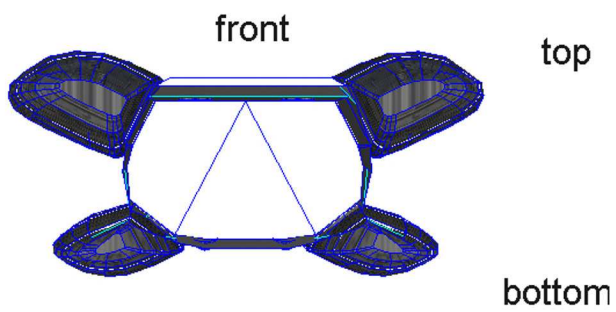
reference shot



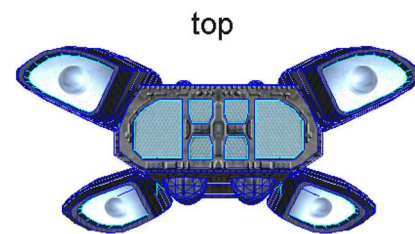
reference shot bottom



reference shot



reference shot rear



reference shot right side

